

Wide KH combihood



Wide KH combihood is based on our proven and popular TH roof hood combined with a Swegon exhaust hood. The design is robust and well suited for projects where low pressure drop and low rain ingress are important.

The inlet louvers are tested by 3rd party according to the EN-NS13030 standard. Separation efficiency is 100% for rain, and 99,5% for fog when air speed is above 2 m/s. Recommended maximum airspeed is 2,5 m/s. Integrated drip tray ensures water is collected and drained away efficiently.

Materials

Roof hood and footplate is fabricated in seawater resistant aluminium AA6063T6. Exhaust hood is in Magnelis with corrosion class C4. This unit is therefore suitable for use in corrosive environments.

Two lifting lugs are mounted on each side of footplate to ease handling. NB! Note that extra tethers may be necessary in areas of harsh weather conditions. Fixation points are provided on hood,

Wide combihood complies to BREEAM-NOR

BREEAM's technical manual requires that vertical distance between intake and exhaust is minimum 400mm. Minimum recommended air exit speed according to BREEAM is 5 m/s.



Generous vertical clearance between roof hood and exhaust prevents mixing between inlet and exit air. Built-in self-closing damper ensures rain does not enter.

Wide standard range of KH combihoods cover air flows from 690 m³/h to 31.500m³/h.

Air flow / pressure drop											
Combihood Type	Jethood Type Ø	Inlet (m ³ /h)		Q(m ³ /h) @ 5m/s	Exhaust (m ³ /h)						
		1,7m/s@10Pa	2,5m/s@21Pa		10 Pa	20 Pa	30 Pa	40 Pa	50 Pa	60 Pa	80 Pa
KH1K	250	690	990	883	748	1.050	1.275	1.462	1.619	1.710	
KH2K	315	1.150	1.710	1.402	1.100	1.510	1.870	2.210	2.525	2.700	3.060
KH3K	400	1.700	2.540	2.261	1.550	2.200	2.600	3.050	3.400	3.725	4.230
KH4K	500	2.600	3.848	3.533	2.400	3.300	4.040	4.510	5.050	5.800	6.840
KH6K	630	4.400	6.408	5.608	3.500	4.910	6.000	6.800	7.650	8.500	10.100
KH9K	800	6.400	9.374	9.043	5.200	7.200	8.800	10.200	11.400	12.600	14.700
KH12K	800	8.056	11.800	11.080	5.200	7.200	8.800	10.200	11.400	12.600	14.700
KH15K	1.000	10.000	15.048	14.130	8.050	11.300	13.700	15.800	17.620	19.300	22.800
KH20K	1.250	13.500	20.000	22.078	12.100	17.200	21.050	24.230	27.080	29.650	34.300
KH25K	1.250	17.000	25.292	22.078	12.100	17.200	21.050	24.230	27.080	29.650	34.300
KH31K	1.250	21.000	31.500	22.078	12.100	17.200	21.050	24.230	27.080	29.650	34.300

Special options:

- Integrated heat tracing to melt snow and prevent inlet icing
- Painted in any RAL code.

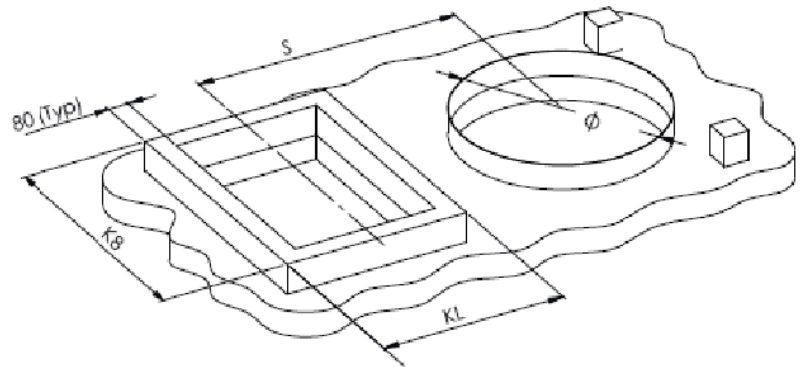
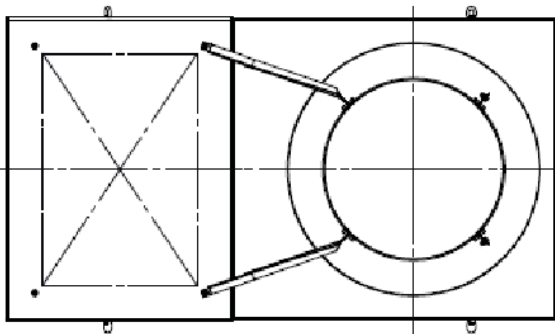
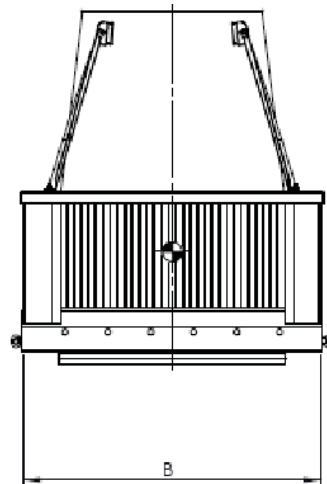
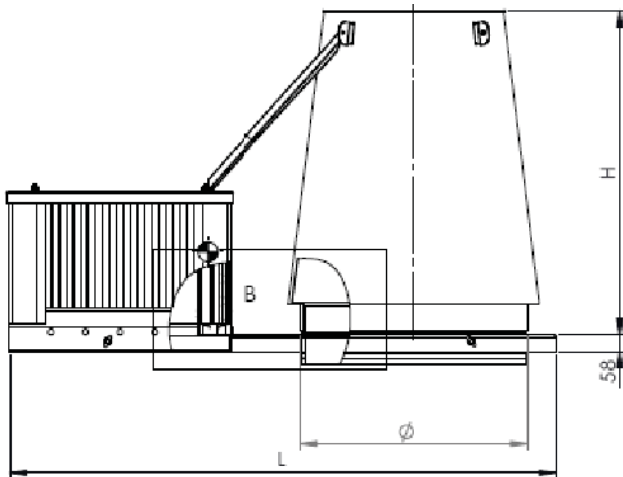
www.wide.no

Wide Industrier AS, Sagveien 15, 1890 Rakkestad, Norway
Phone: 69 22 78 00 | E-mail: wide@wide.no

60211EN2107_02 Dec 2025



Wide KH combihood



Combihood Type	L	B	H	Ø	S	KL	KB	Weight (kg)
KH1K	1.057	496	606	250	605	436	476	35
KH2K	1.172	561	668	315	663	486	541	45
KH3K	1.297	646	757	400	725	526	626	55
KH4K	1.458	746	824	500	805	586	726	70
KH6K	1.682	876	946	630	918	681	856	90
KH9K	1.927	1.046	1.140	800	1.040	756	1.026	120
KH12K	1.927	1.046	1.140	800	1.040	756	1.026	135
KH15K	2.257	1.246	1.258	1.000	1.205	886	1.226	165
KH20K	2.582	1.496	1.479	1.250	1.368	961	1.476	220
KH25K	2.702	1.496	1.479	1.250	1.428	1.081	1.476	240
KH31K	2.702	1.496	1.479	1.250	1.428	1.081	1.476	265

Dimension table

